

Taenia Solium

- It is called Pork tapeworm.

Phylum - Platyhelminthes.

Class - Cestoda (Cestocida).

Genus - Taenia

Species - Solium.

- Habit and Habitat :-

It is found in small intestine (Ileum) of Alimentary Canal. It is anchorage with ileum by Scolex.

- Distribution :-

It is found all over Globe wherever Pig is domesticated.

- Shape :-

It has long and ribbon shaped structure.

- Colour :-

It's colour varies from opaque white, Grey to Cream colour.

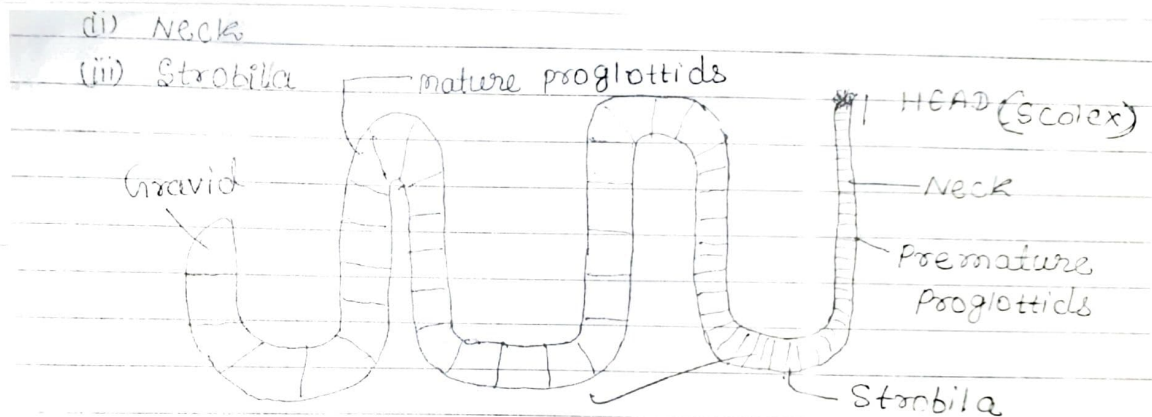
- Structure :-

It's body is divided into three parts :-

(i). Head (Scolex)

(ii). Neck.

(iii). Strobila.



Its body is divided into three parts.

(i) HEAD (SCOLEX)

(ii) NECK

(iii) STROBILA

(i) ~~HEAD~~ HEAD :-

It is the anterior part of the body. It is also known as Scolex. It is a hook like structure and anchorage to Intestine. Scolex has not own food. It absorbs digested food like Glucose, amino acid and Glycerol.

(ii) NECK :-

It is found below the head (Scolex). It is thin and longitudinal. It stays in budding stage means it reforms new segments; which is called Growth.

(iii) Strobilla :-

It is posterior part. It is divided into 2 parts, mature proglottids and Gravid mature proglottids. Mature proglottids contain complete set of male and female gonads. While Gravid proglottids contain Uterus which becomes enlarged and Gonads degenerates. It stores fertilized egg. Number of testes is numerous while ovary is single and bilobed.